

The **Methodist** Church
Loughborough Circuit



Circuit Link

Winter/Spring 2025



Pastoral Letter

Dear friends,

As I write, over in Washington D.C. a seventy-eight-year-old is preparing to take over from an eighty-two-year-old at the helm of the affairs of the most powerful nation in the world. Meanwhile the head of the world's largest and oldest Christian Church has just celebrated his eighty-eighth birthday.

Enough, I think, to provoke some thoughts on a Christian understanding of old age. What gives me a special interest in the subject? Well, for one, the way the lady at the counter in the café looks at me slightly anxiously and kindly enquires whether I'm 'OK to carry the tray?' Or when I look back at my diaries from a few years ago and realise that I don't get through a fraction of the things in a day now as I did then. Or again, the times when I am about to deliver some imagined pearl of wisdom only to stop short, realising that the key name or place I am about to say has mysteriously vanished from my mind. You get the idea.

Of course, I could turn for advice to some well-worn sayings on the subject, like "Age is just a number; you're only as old as you feel." There's a lot of sense in that. Innovations in health care have enabled countless people to live an active and purposeful life far into their eighties and nineties and even beyond, and we can only give thanks for that, and do our best to maintain a forward-looking state of mind and health of body. Yet neither can I forget the number of times in the course of my ministry when I've heard someone ruefully remark that 'It's no fun growing old.' Should I have told them to stop moaning, or rather wasn't it wiser to listen to how they were feeling, and to acknowledge that our later years can sometimes bring frailty, pain, loneliness, bereavement and a loss of much that made life worth living?

Perhaps the thing we most fear is loss of independence and control over our lives. I remember the words of my old College Principal who said 'age brings about a steady narrowing down of choices' when he commented on Jesus'

words to Peter in John 21:18 (Look it up!). There is wisdom in accepting that we are all dependent on one another, at whatever age, or 'members one of another', as Paul put it when writing about the Church as Christ's body - interdependence rather than a stubborn clinging to independence. Maybe I should learn to accept help with the tea tray!

Old people don't feature prominently in the New Testament, but at this time of year we are often reminded of Simeon and Anna, who had grown old in God's service, faithfully watching and waiting for the coming of his kingdom. In old age they saw the dawn of the fulfilment of their hopes as they greeted the child Jesus and his parents in the Temple, so that Simeon could say 'now you let your servant depart in peace.' In the life of church and in the world there is a place for patient, prayerful watchfulness as well as vigorous action, and we're never too old to engage in that. We can also encourage younger people who come with new ideas and approaches and take over tasks which are now beyond us. Let's remember how Peter on the day of Pentecost took up the vision of Joel: 'I will pour out my Spirit upon all flesh ... and your young men shall see visions, and your old men shall dream dreams.'

Yours in Christian service,

Hedley Cousin

Loughborough Circuit Website

The Circuit has a website at www.loughboroughmethodist.co.uk

Each church has a page, and you can access the latest preaching plan.

If you spot anything that is out of date, please do let the webmasters know by contacting Peter Thorpe (peterthorpe52@gmail.com) or John Pipet (digital@loughboroughmethodist.co.uk).

Any churches that would like to be able to edit their own page can contact us to activate their account.

Chaplaincy

A small-group resource for nurturing engagement in God's mission through chaplaincy.

Local, congregation-led chaplaincy is one of the most effective ways to collaborate in God's mission in the world; local people responding to local needs over time can change the world!

Our circuit will be running a seven-week Chaplaincy Everywhere course in the spring – two sessions before Easter, five after. Dates and venue will be confirmed once we know who will be coming along.

This seven-session course is designed to take a group from being interested in the ministry of chaplaincy to actually planning a chaplaincy ministry and doing it.

The course is designed to be used in a small group of three to eight people, beginning with the mission of God and ending with the practical details of who is going to do what and where; this material mixes deep reflection, individual and group exercises as well as practical resources to lead you to respond to your local community.

If you would like to know more, please talk to Karen Ette or Chris Watkins.

To register your interest please email:

drkarenette@gmail.com

stating which church you are a member of and what days/times are best for you.

Every blessing,

Karen and Chris

Chaplaincy Everywhere

- for your community
- sent by your Church
- something you can do



Barrow upon Soar

Our groups have been busy throughout the autumn with their various meetings and these all seem to culminate in a Christmas lunch or dinner which were enjoyed at various hostelrys in the village!

We hosted the Circuit Service on Sunday 1st December and were pleased to see so many friends join us. Unfortunately someone parked in the Conservative Club car park, evidently not seeing the warning notices, and received a fine. Please be aware when visiting us that OUR car park is accessed by the drive between the Church and Pearl City, the Chinese takeaway, that is, to the left of our building.

We were very pleased to host the Barrow upon Soar Guides, Brownies and Rainbows Carol Service and it was standing room only in the Worship area. It was lovely to hear the children singing the carols and performing their group items for their parents.

We had a successful Christmas Minimarket early in December complete with Father Christmas and his elf! Our usual supporters were there plus a lot of new faces to enjoy the items on offer and sample the bacon cobs.

Our Carol Service was held at 5.00 pm and led by Rev Sandra and again attracted a large number of friends who enjoyed the readings and carols. Christmas Eve Holy Communion was different to other years when we have had a Crib Service but again this was well attended and a lovely beginning to the proper Christmas celebration.

The bollards outside Church were decorated this year as Advent Candles of Hope, Joy, Love and Peace with our usual life sized, illuminated Nativity Scene displayed in the Foyer for all to enjoy.

We continue our group programmes in January and if anyone should be interested in joining one of them - Bible Study, Cuppa and Chatta, Fun@Church, Ladies Circle, Men's Supper Group or Sharing Scripture then please email barrowmeths@gmail.com or see our website.

Janet Thompson



Christchurch, Shepshed

Christchurch had the joy of welcoming two new members, firstly Malcolm who transferred from a Baptist church after being invited to supplement the choir and finding a warm welcome and support. We also welcomed Gill who has moved from Markfield to Shepshed and



has become a key member of our Something Different group.

Last year the people attending Something Different had several conversations about not having the confidence to defend our faith to others. So this year we are considering how to answer common questions. In January we looked at the evidence that gives us confidence to defend the truth of the Bible. In February we will look at ways to answer to questions about Jesus. All are welcome to join us in the back room of the church at 10:45 on the third Sunday of the month.

On the Sunday before Christmas we served a Christmas dinner to 32 people who attend our Chat and Chomp held each Wednesday. Many stayed on to attend our carol service. Everyone is welcome to join our sessions on Wednesday between 10am and 2pm when we serve refreshments and a lunch.

Our coffee morning on a Friday is currently raising funds for the MND Association. We are open from 9:30-12:00 again all are welcome.

Katy Brookes-Duncan

Christchurch Lay Worker

Shepshed Scribblers Writing Group

Do you enjoy writing? Maybe you would like to write, but don't seem to get round to it.

Whether you prefer putting together factual descriptions or creating an imaginative piece, there is an open invitation to come and have a go with the Shepshed Scribblers.



We meet at Christchurch, Shepshed on the second Saturday of each month between 2 and 4 pm. Typically, we are given a theme to stimulate thoughts and spend half an hour or so working on this in any way we choose.

Re energised with tea/ coffee and a biscuit (contributing £2 for the session), we then consider a further topic and produce a paragraph or two on that theme.

Recent topics have included Holiday experiences, Sunflowers, Hats, Autumn gardens, Fireworks and New Beginnings.

The sessions are easygoing, the atmosphere light with no compulsion to share compositions with the group - although many of us are usually ready to do so after working on a piece.

For further information contact Sadie at sadiesclarke@gmail.com

I do hope you feel able to join us sometime.

Colin Lamb

Passion

Passion Youth Hub opened its doors in 2009 in response to the needs of young people in the town, giving them a safe space in the heart of the community. It is a project supported by Churches Together in Shepshed project. Although it was originally funded by the Leicester Diocese



in recent years we have relied on successfully applying for grants. However, when the funding came to an end last autumn we had to close our doors and raise the funds to secure the building and cover our bills. Thank God that we quickly raised more than we needed but we need to continue to fundraise.

We have established a new board of trustees and been able to do some renovation work on the building. We are in the process of recruiting volunteers to enable us to reopen the drop in sessions for 11-18 year olds.

Passion's building is an old shop unit on the Bull Ring in the centre of Shepshed. I have recently come to understand that the circuit leadership team have been praying for a shop unit. So over the next few months we



will be exploring together whether this is the answer to prayer. Could Passion's building also be the base for a New Places for New People project?

On Saturday 1 March at 7pm at St Botolph's Church, Shepshed there will be a fundraising concert. The Loughborough Concert Band and Caroline Sharpe Singers will perform. Tickets are £7 each and will be available on the door or from me, 07305 909442.

Katy Brookes-Duncan

East Leake

Greetings from East Leake Methodist Church.

So looking back to the last quarter of 2024.

We continue to worship on a Sunday morning at 10:30 and have been encouraged by the number of members who would love to come to church but for various reasons can only attend via “zoom”, when one person was able to attend in person they said “it’s like we’ve never been away”.

In the last few weeks we have had one or two people from the services rehabilitations centre at Stanford (old Stanford Hall). With our flexible seating arrangement we have been able to accommodate their mobility requirements which has enabled them to take full part in our communion service.

Our 4 Square meeting opened its doors to Karen and Brett who gave us a very interesting and entertaining talk about their adventures while walking the Camino pilgrimage path in Northern Spain during Karen’s last sabbatical.

Since our last church council meeting in October our “Ladies Fellowship” meeting held each alternate Tuesday afternoon has renamed itself as a “Fellowship meeting” hoping to encourage a more diverse attendance.

We continue to hold our free Saturday morning coffee morning as a “warm space” activity with only a light touch voluntary donation.

On Saturday the 14th December we had our Christmas tree festival in aid of Action for Children and to date we have collected £225. Chris Watkins led coffee with carols in the morning and we were joined in the afternoon by Chora Voce choir from Shepshed. We were thankful and very pleased to welcome support from all our village churches and our circuit.

As is our custom we assembled our Christmas nativity lights. We hope they are a bit of a focal point for people passing the church, particularly young people as they wend their way to school in the morning and back in the afternoon.

So If you’re in the village on a Saturday morning between 10 and 12 please pop in for coffee and biscuits and chat.

Bryan Harrison



Knighththorpe, Loughborough

Knighththorpe Methodist Church: The Seeds of Community Engagement begin to blossom

Over the past half year, we have launched a variety of outreach initiatives and have seen God's blessings in our community engagement efforts – gradually we have strengthened our bonds with local residents and have regular attendees actively joining our activities.



Gardening Club: The group has continued to help take care of the community garden (see below) and the Church back garden. Regular attendees include members of the Church and volunteers from Incredible Edible Loughborough and the local community. Some of the new attendees are drawn to our community garden, which has inspired them to come and contribute. Volunteers are continually needed to help maintain and grow the gardens and we hope to see this group growing in both size and community bonds. The group will resume its meetings when the end of winter is drawing near: Wednesday 12 February, 5 March, 19 March 14.00-16.00 (dates from April 2025 onwards TBA).

Community garden (in collaboration with Incredible Edible Loughborough): Thanks to the selfless time and efforts devoted by volunteers, our community garden at the front lawn has produced various sorts of vegetables (e.g. potatoes, broad beans, sweetcorn, tomatoes, lettuce, radish, pepper, courgettes etc.), all of which are for free collection by the local area. We are thrilled to see people attracted by the community garden starting to connect with us – some have stopped by to visit and/or collect the harvests; some have given away their own garden harvests to us for sharing with the wider community; a few have even joined



our volunteer team. This is exactly what community engagement is about – finding a common ground/medium which connects all. Having Incredible Edible Loughborough conducted the groundwork for us, we welcome all to join our small team of volunteers to help maintain and grow our community garden. Anyone interested in growing food, whether new or experienced, can join us on a Gardening Club meeting stated above.



Calligraphy workshop: Crafter/calligrapher/founder of WRITE.GOOD.WORDS has supported us again by running this brush calligraphy workshop on 27 July. The participants (mainly from the local area) have enjoyed a cosy morning and tea, coffee and refreshments that followed.

Summer Party: We hosted our second open-door party on 7 September which included various activities related to green living and upcycling, in collaboration with local groups, such as potato harvesting workshop (by Incredible Edible Loughborough), repair café (by Transition Group), plantation workshop, garden label drawing, craft stations, face painting, live music. It was truly uplifting to see a remarkable rise in the number of participants this time compared to our first open-door party in spring and to have friends and members of the Church and the Circuit as well as people from the local area (including new faces who visited the Church for the first time) interacting and connecting. We would like to thank all volunteers. Given the highly positive reception of the repair café, we are planning on further sessions this year.



Art journalling workshop: We are grateful to have Chris Watkins run this workshop for us on 25 September where she shared her skills and knowledge in creating customised journals from daily objects with the participants, a majority of which came from the local area.

Christmas wreath workshop and Christmas decoration workshop: At these two sold out workshops initiated and run by Church members (on 30 Nov and 14 Dec), participants from the local area and beyond joined together and spent a joyful and creative time and brought home unique festive wreaths/decorations. Festive refreshments were served.



Christmas Carols Afternoon: On 7 December, we held this carols event, which was moved indoors in the chapel due to the rainy weather. We are thankful to those who braved the rain to join us for a cosy late afternoon filled with Christmas carols and music (and of course, mince pies and hot chocolate drinks). Special thanks to John Pipet and Rob Newton who shared their music with us and all volunteers who put the event together. We will pray for better weather next year which will allow us to run the event outdoor at the front lawn with toasted marshmallows and mingle with the local neighbourhood, like we did last year.

May the seeds of community engagement sown by our volunteers and those involved in our journey continue to blossom, and provide nourishment to the foundation of our efforts upon which we can share the love, peace, and joy of God.

For news and updates of our community engagement activities, please follow our Facebook Page ([link](#)) or get in touch with us at kt-community.engagement@loughboroughmethodist.co.uk.

Vanessa Li

Loughborough Chinese Methodist Church (LCMC)

A Journey of Faith and Compassion: Our Chinese Church Visit to Kenya

From August 21st to August 30th, 2024, Rev Calvin Cheung with 4 members of our Chinese church embarked on a heartfelt and transformative mission trip to Kenya. This journey was not just a physical travel across borders, but a spiritual experience filled with love, faith, and meaningful encounters. Through months of preparation, prayers, and fundraising, our church family came together to make this mission possible, raising a total of £1,400. This journey strengthened our faith and deepened our understanding of God's work among the nations, as we witnessed the challenges faced by the less fortunate and shared in the stories of hope, faith, and transformation.

Preparation and Fundraising

The mission to Kenya was a shared vision for our church community. To make this trip a reality, our members organized a fundraising event in a short time. From charity events to generous contributions, everyone came together with hearts full of love and commitment to serve. These efforts demonstrated the power of unity and sacrifice, laying the foundation for our life-changing trip.



Visiting the Slum Area and Serving the Poor Children

One of the most impactful parts of our visit was to a local slum area, where poverty and hardship are daily realities. We were deeply moved as we saw families living in extremely challenging conditions, struggling to meet even their basic needs. In this environment, we were privileged to minister to poor children who welcomed us with bright smiles and open



hearts despite their circumstances.

We spent time with them, sharing stories, songs, and prayers. Through simple acts of love and kindness, we brought food supplies and small gifts, hoping to bring a ray of hope into their lives. Their joy and resilience reminded us of the importance of faith, even in times of adversity, and their pure hearts touched us deeply.

Fellowship with the Chinese Church in Kenya

During our stay, we also visited a local Chinese church in Kenya. It was a wonderful and uplifting experience to meet fellow believers who share our culture and language yet are part of God's work in a different land. The congregation welcomed us warmly, and we had the opportunity to worship together, sing praises, and hear inspiring testimonies of faith.



We listened to powerful stories from our friends in the church about their struggles, perseverance, and trust in God's providence. These moments of fellowship reminded us that we are all part of the same body of Christ, no matter where we are in the world.

A Remarkable Story: John's Journey of Faith

One of the most inspiring highlights of our visit was meeting John, a former Muslim who found Christ and experienced a life-changing conversion. John's story is a testament to the power of God's grace. His journey was not without challenges, as he faced rejection from his community and endured many



Rev Calvin gave some theology books to John for study in the theology school.

personal sacrifices. Yet, through his unwavering faith, John has embraced the calling to serve the Lord.

During our time with John, we accompanied him to a local theology school, where he began his studies to become a minister. Seeing his dedication and passion for God's Word was both humbling and encouraging for all of us. John's story serves as a powerful reminder of the transforming power of Christ's love, which transcends all barriers.

Reflecting on the Journey

As we returned home, our hearts were full of gratitude and reflection. This journey to Kenya allowed us to experience firsthand the challenges faced by the poor, the beauty of fellowship among believers, and the incredible stories of transformation in Christ. The memories of the children's smiles, the warmth of the Chinese church community, and John's unwavering faith will remain with us forever.

We pray that God continues to bless the people we met, especially those living in poverty and our brother John as he pursues his ministry. May our experience inspire us to be more compassionate, faithful, and committed to sharing God's love wherever He calls us.

"For I was hungry and you gave me something to eat, I was thirsty and you gave me something to drink, I was a stranger and you invited me in." -

Matthew 25:35



Sileby

Sileby has recently started an initiative called 'the Joy of Music', details are provided below:



The Joy of Music is a music themed initiative to help address individuals needs with respect to improving their mental health.

The meetings provide access to music-based services for residents of Charnwood, to improve mental health and wellbeing.

- To mitigate financial barriers preventing access to music education and/or skills development, together with its associated personal, cognitive and social benefits.
- To connect local mental health and wellbeing-based organisations and services.
- To promote, advance and enrich music appreciation, wellbeing and/or performance skills.

The service offered could include: a Rhythm club, music listening, discussion, performance, music making, learn to play, guest speakers/tutors, a space to simply meet new people, listen and have a cuppa.

We want the members of this group to help shape its future.

Service access criteria is 18+, residents of Charnwood only. For individuals with an interest in music (at any level) experiencing low-level mental health challenges brought on by varied stressors such as financial concerns, loneliness/isolation, bereavement, carers, anxiety, depression, etc.

Please note, we are a dementia friendly service but unfortunately cannot offer one to one support - members with care needs would need to be accompanied by a carer.

Music can be medicine.

Get your GP to refer you or you can use the Self-referral form on the NHS Joy app.

<https://services.thejoyapp.com/en/listings/15921-joy-of-music>

Submit a referral and we'll get back to you as soon as we can.

Rob Newton

St Bartholomew's United Church, Quorn

Reorganisation of Leicester Diocese continues at a steady pace through a project titled 'Shaped by God Together' which will result in groupings of parishes that will look remarkably like Methodist Circuits. In our case we will probably become one of 13 parishes comprising a 'Minster Community' under the leadership



of a team of four people, only one of which has to be an ordained minister. This will be challenging for all concerned but also offers opportunities for the churches concerned to work together in mission and to share resources. It will probably be 2026 before this new structure is finally in place, and it will make no difference to Quorn's place in the Loughborough Circuit. Incidentally, we will be celebrating the Golden Anniversary of the coming together of our Methodist and Anglican churches in Quorn at Pentecost on June 8th this year, a moment for celebration!

Meanwhile we have had a busy and exciting Christmas beginning with a successful Nativity Festival in church on Advent Sunday which attracted a large number of visitors and left the church brightly decorated throughout Advent and Christmas. On Christmas Eve our Crib Service drew over two hundred worshippers, half of them children. By then, during the final two days of term, we had hosted about 1500 students and staff from our two church schools in the village for their own Christmas services, in six successive cohorts all stewarded by church members.

It was just as well that our heating system had finally been fixed with the help of grants and donations. Up to that point we had been handing out blankets as worshippers had arrived for services.

Mike Bird

Mountsorrel

Since our last write-up we have celebrated our Church Anniversary, Harvest Festival, Gift Day and Missions Sunday – all before arriving at our annual Carol Service on Sunday afternoon December 22nd. This year we were pleased that members of our Boys' Brigade presented a suitable sketch which depicted The Three Kings arriving to present their gifts to Baby Jesus.



We continue to hold our 4th Sunday in the month services which commence at 4pm and which are followed with a Bring & Share Tea. The next dates is February 23rd 2025, and *ALL are WELCOME!*

In November we were saddened that our oldest member, Dorothy Norwell, passed away aged 103 years old!

In December Les & Gloria Longmire celebrated their Golden Wedding. We were also very pleased that the "Simply Singing" (Community Choir) held its annual Christmas Concert in our chapel on December 14th. A retiring collection raised over £400 for its chosen charity – Cardiomyopathy U.K.

We are pleased that our suite of premises are used by the local community – at some time – every day.

We look forward, in anticipation, to what The Lord has in store for us in this New Year.

Geoff Wainwright

Trinity, Loughborough

Some Highlights of the last few months.

At the end of November, we worked alongside the URC and Baptist Churches to host the 'Journey of the Magi' at the Baptist Church. The show offered a contemporary comparison between the journey the wise men took 2000 years ago and our own preparations in the run up to Christmas today. We got an audience of over 100 and it was received well including one young boy dancing along in parts on the sideline! A future cast member maybe.



We are co-operating more with these local churches and have worked together on a choir service at the URC and a Jazz Vespers led by Chris Hill and his jazz band at the Baptist church. We are also working with members from these 2 churches and others to restart the Christian Aid group for Loughborough. We have agreed to have a Christian Aid lunch three times a year and Trinity's was a soup and puds meal on 12 January after the Covenant Service.

We had another of our joint services with the Chinese church, led by Victor Poon, one of our circuit's new local preachers. It is always good to see the church full and to have our two different cultures and traditions joining together in the one spirit. The food afterwards also helps, and we pray that over time the bonds between our two congregations will grow further and deeper.

This may sound unbelievable to some, given I have grown up in the Methodist church, but for Harvest I went to my very first beetle drive. It was a good way to spend a social evening together after a fish and chip supper.

Recently we had a large coffee morning hosted by our pastoral linkers to which invitations went out to those with looser links to Trinity. Time was taken to talk with everyone and from this we hope to set up a new craft group.

We also need to start thinking about how we can make better use of our building during weekdays. The redevelopment plans to move Early Learners to one side of the building, utilising space freed up by the closure of Teamprint. Trinity has committed funds and the Circuit has agreed a grant. We are applying for other grants and have selected a builder from the tender, hoping to get the works done this Spring.

Within this work, we plan to install a push button system to open the heavy front door. This is the biggest item that has come out of our roof breaker group which is working to solve issues people may have participating in church activities. Other things are on a smaller scale and often simple to solve once we are aware of them. One easy solution was to bring a chair with arms into the coffee bar to help a person who was having difficulty getting up from armless chairs.

We look forward to 2025 and all it will bring for Trinity.

Andy Thorpe

Twelfth Church

[www.facebook.com/
TwelfthChurch](https://www.facebook.com/TwelfthChurch)

12th church continues to provide a worship service each week on Facebook, using both recorded services and livestreaming from different locations within the circuit.

It is still much appreciated by those unable to attend a physical service for whatever reason. With, on-average 30 or so “on-line congregation” members coming from both within and beyond our circuit.

Communion and Circuit services are still the most well-attended of our on-line services.

Other highlights have included services led by some of our trainee preachers, a service recorded at Mount St Bernard Abbey, and a Christmas special – a Nativity that had been recorded at Trinity.

Often, when we record our preachers, they will read the Bible lessons themselves. If you would be interested in being available to be asked to record Bible readings, please e-mail a message to digital@loughboroughmethodist.co.uk. Sometimes the recordings are rather close to the Sunday of the service, so we won't always ask for other readers, but it would be good to see even more faces from the circuit during our services.

What want to see from 12th Church? If you have ideas or suggestions on what you would like to see from the 12th Church, please e-mail them to: digital@loughboroughmethodist.co.uk Thankyou.

John Pipet



Woodhouse Eaves

We may be few in numbers worshipping on a Sunday morning but we are a very friendly and welcoming few. There are lots of things happening in the life of the church though, and I will endeavour to give you a flavour here. Our Messy Church, once a month, is hugely successful and popular. We have a core of regular families but are also encouraged by new families joining us. It was lovely to see that at least four of our families joined us for our Carol service.



Play and Praise (Thursdays am) provides a welcoming space for parents/carers and pre school children. V who runs the group has much experience and expertise with young children. It was lovely to see the church being used for the Toddler Nativity in Christmas week, full of excited little ones and their supporting fans.

Take Time is an initiative which has now become a regular feature of church life. Sessions are fortnightly on a Friday morning. We often use zoom for these which works well. Attendees really appreciate the opportunity to rest in God's presence and be still, while learning more about Jesus.

As they enjoyed it so much last year, the WI asked to use our church again for their annual Carols and Cakes. It was lovely to have the church filled with lovely voices. Many commented on the relaxed and friendly atmosphere.

We have many regular community groups who use our premises. There are two choirs that perform concerts raising money for charity. The Wednesday choir recently had a Christmas concert to raise money and awareness of cardiomyopathy at Mountsorrel Methodist Church.

Thursday choir performed at the end of November in Hodson Hall for LOROS.

Beacon Players, the local drama group, rehearse in our upper room. Several of our stewards are members and regularly take to the stage to perform.

Baby Ballet and the Local History society use the church facilities regularly.

The Cub Scout group like to use our premises for a sleepover.

Very best wishes and blessings from us all at WEMC.

Sian Mollart

Wymeswold

Life continues to be busy at the Chapel with the usual round of regular activities: a monthly coffee morning on the first Saturday of the month, a weekly drop-in Warm Welcome on Tuesday afternoons, which is extended to include a soup lunch once a month, and regular worship often shared with our friends from St

Mary's. We are so thankful for the small team of helpers whose cheerful and loyal support make all this possible.

Since the last Circuit magazine there have been a handful of special events.

In November we hosted White-Watch from Loughborough Fire Station on a Sunday morning when morning worship was taking place at St Mary's. The fire-fighters spent time offering safety advice to the local community and giving tours of the engine to some very excited children.

Meanwhile Margaret and Eleri provided hospitality inside the Chapel. We picked out all the toys and books that fitted the theme of the day and ended up enabling some significant pastoral conversations whilst keeping the children engaged.

December was a particularly busy month at the Chapel. We hosted another *Experience Journey* with Wymeswold School on Monday 2nd and Tuesday 3rd December. This new journey was *Experience Advent*, and our team really enjoyed welcoming the school children from years 4, 5 and 6 to share with us in learning more about this special season of the year.

We held our Christmas Mini Market on the morning of Saturday 7th December serving home-made mince pies, tea & coffee. In addition to the usual produce of jams, home-made cakes and pastries there were beautiful handmade cushions and handcrafted items for sale. It was lovely to hear the buzz of chatter throughout the event as people shared fellowship together.

The Wolds Choir performed a super Christmas Concert on Wednesday 11th December. They rehearse each week at Chapel and we were so pleased that they wanted to use our building for their concert. The Chapel was packed

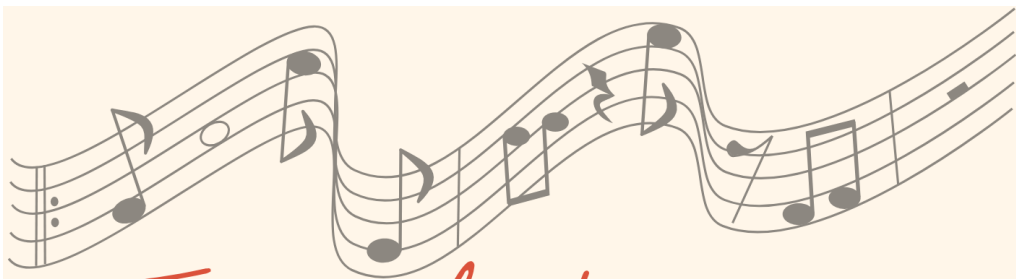


and everyone agreed it was a great way to get into the Christmas spirit.

On the occasion of the final Warm Welcome of the year we hung up nearly 50 hand-made Christmas Tree Decorations outside the Chapel. Each had a laminated label with a Christmas greeting and giving the website address for the Methodist Church's 'Hush the Noise' Advent and Christmas campaign for 2024. We put a post on our Facebook page and in the village Facebook group inviting people to collect a decoration for their tree and within around 15 minutes received a photo of one of the decorations already being displayed. All the decorations had found new homes within around 24 hours and it caused quite a stir in the village!

Eleri Bristow





Joy of Music

Musical activities to promote better mental health

Tuesdays
Sileby Methodist Church Centre
10:30am-12:30pm (doors open from 10am)

Call Ian on: 07912623117
or scan the QR code below for more information. 18+.



Funded by:



AND KIND DONATIONS